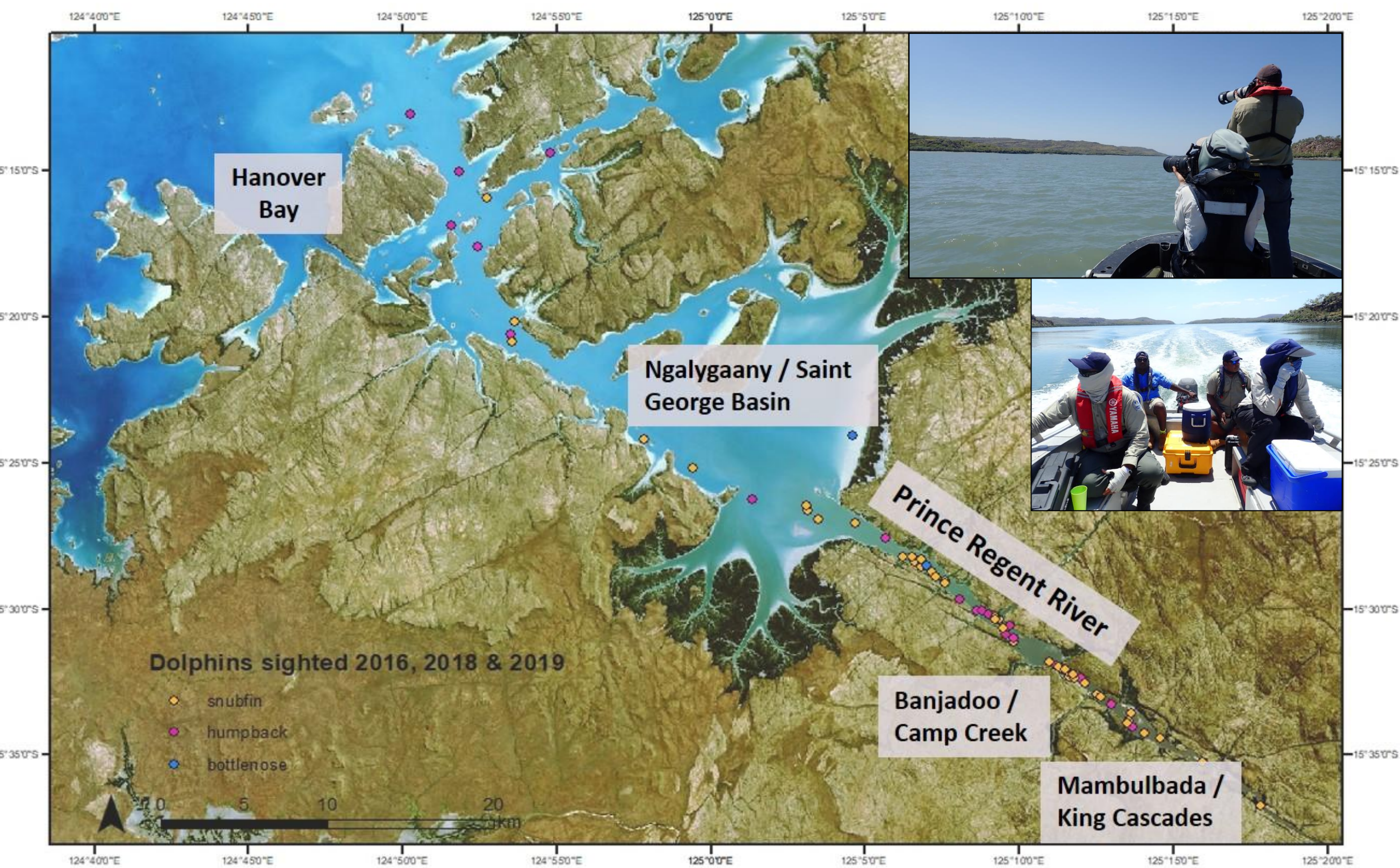


# Jigeedany (dolphin) survey in Lalang-garram / Camden Sound Marine Park - Dambimangari sea country -

## Prince Regent River



Common name – Australian snubfin dolphin  
Scientific name – *Orcaella heinsohni*



Common name – Australian humpback dolphin  
Scientific name – *Sousa sahalensis*



Common name – Indo-Pacific bottlenose dolphin  
Scientific name – *Tursiops aduncus*

### KEY POINTS

- 3 types of jigeedany (snubfin, humpback and bottlenose)
- We tell them apart by the fin on their back
- Bottlenose jigeedany like big open water
- Snubfin and humpback jigeedany like rivers and mangroves

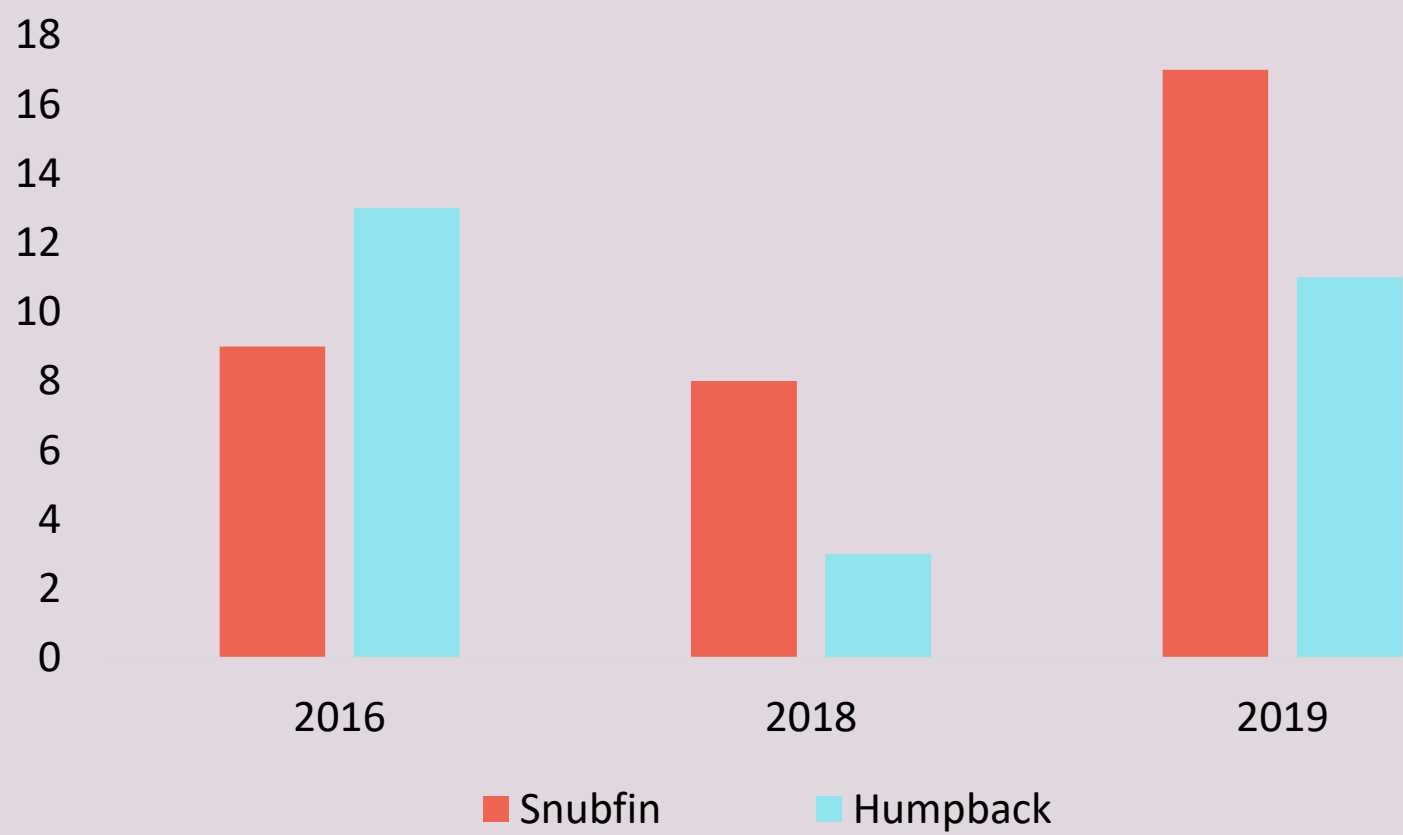
### Jigeedany family groups

- We use a dart to take a small piece of skin and blubber
- This has jigeedany DNA with a unique genetic code for each animal
- We use DNA to see if jigeedany are related in a family group or do not mix



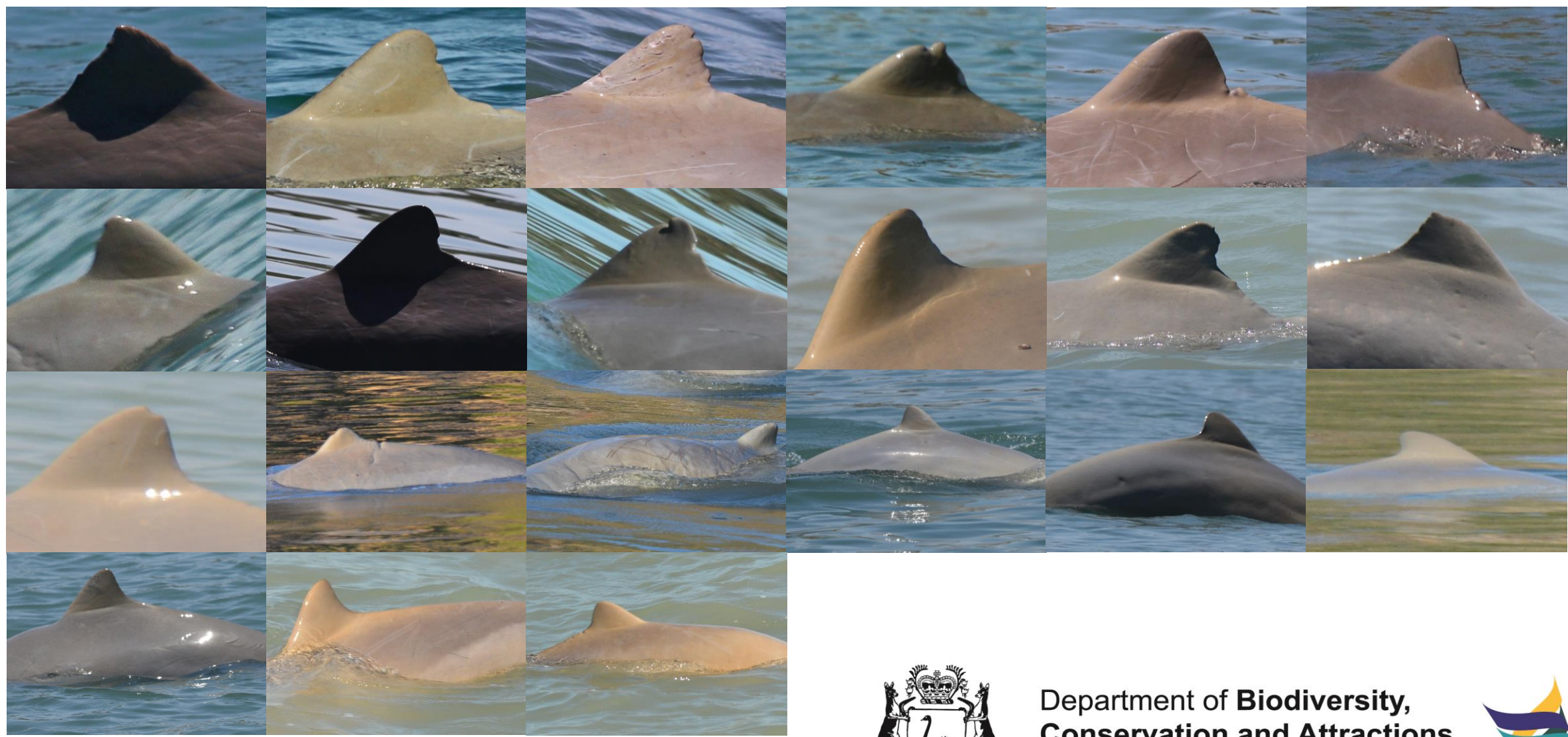
These jigeedany have been darted and their DNA will be tested

Number of jigeedany sighted in Prince Regent River



A snubfin jigeedany hunting fish.  
Photo credit: Amon (Edmund) Jungine

## Snubfin jigeedany in Prince Regent River Can you help us name them?



### Jigeedany eat these types of jaaia



Wolf herring  
*Chirocentrus dorab*



Fringe-finned trevally  
*Pantolobus radiatus*

What other jaaia do they eat?