

Kimberley Marine Research Program

WAMSI Project 2.1.2

Values and aspirations for coastal waters of the Kimberley

The overarching aim of this project is to document and analyse the social values and aspirations of people associated with the existing and proposed marine parks at Eighty Mile Beach, Roebuck Bay, Horizontal Falls, Lalang-garram (Camden Sound) and North Kimberley and other coastal waters of the Kimberley between Eighty Mile Beach and the Northern Territory border.

Background

Much of the Kimberley coast and its waters are part of existing or proposed marine parks. To-date, little attention has been paid in Australia or elsewhere to the social values associated with marine parks. Understanding how, where and why people value the coastline and marine environment is essential for effective planning and management, particularly when public assets such as marine parks are involved.

Research Objectives

1. Describe and analyse how people value the Kimberley coastline and marine environment and what places are important to them, especially for Aboriginal people, through in-depth face-to-face interviews accompanied by participatory mapping in the Kimberley region, Perth and Darwin.
2. Undertake a follow-up web-based Public Participation GIS (PPGIS) survey to extend and validate results from the face-to-face interviews.
3. Undertake stated preference choice analyse (by including a series of questions exploring respondents' preferences regarding future activities



*Crocodile Creek, Buccaneer Archipelago
(Image: J. Strickland-Munro)*

- and management of the Kimberley coast in the web-based PPGIS survey).
4. Undertake a detailed analysis of the social values for up to two marine parks through extended consultation with Aboriginal Traditional Owners and others with a particular interest in the chosen marine park(s).

Expected Outcome

Greater understanding of how and where people value the Kimberley coastline and marine environment. This information can be used by planners and managers to:

1. Minimise potential conflicts
2. Engender greater public support for coastal and marine conservation and management issues

What we've found

- The social values associated with the Kimberley coastline and marine environment are largely non-consumptive, direct uses (e.g. physical landscape, Aboriginal culture, therapeutic, recreation (other than camping and fishing)).
- More than three-quarters of those interviewed mentioned and biodiversity (80% of all interviews) and the physical landscape (77%) as valued.
- Roebuck Bay; the western and northern coastal fringes and marine environments of Dampier Peninsula; the Buccaneer Archipelago; Horizontal Falls; and Montgomery Reef appeared as 'hot spots' for a number of values.

Kimberley Marine Research Program

WAMSI Project 2.1.2

Values and aspirations for coastal waters of the Kimberley

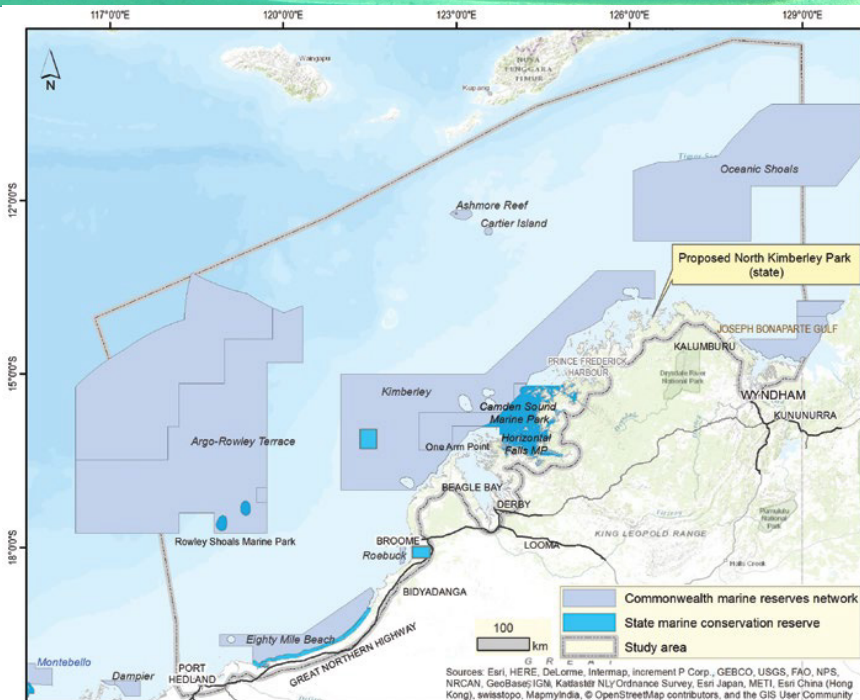


FIGURE 1 Kimberley marine parks (current & proposed)
 Source: Geoscience Australia 2014, Department of Parks and Wildlife 2014)

places and the number of people expressing these values.

Future work

Further research is needed to validate and extend these findings regarding values, particularly for the northern and eastern Kimberley coastlines (data from an online Public Participation GIS survey is currently being analysed to progress this research need).

Opportunities exist to more comprehensively map the cultural and other values held for Kimberley sea country by Aboriginal Traditional Owners.

Opportunities also exist to develop related agreement-based research with Traditional Owner groups at a smaller scale, to explore values held for country by a range of stakeholder groups. This information can then be used to progress Aboriginal management of country (including tourism development)

What does this mean?

- All of the Kimberley coast is valued. Thus, no part is 'value-free' and people must be consulted regarding its future, no matter if the location appears to be used (i.e. 'direct use, consumptive values' and 'direct use, non-consumptive values') or not (i.e. 'indirect use values' and 'non-use values').
- Physical landscape values are pivotal to peoples' experiences of the Kimberley. Recognition of the importance of this value must underpin all planning and decision making. Future tourism efforts must protect this coast's 'wildness' while also capitalising on it.
- Biodiversity is widely and intensely valued, both on and offshore. Biodiversity thus provides an important base for societal support for marine parks and their nature conservation role.

- Careful consideration of the social impacts of developments associated with access to the Dampier Peninsula and Buccaneer Archipelago is essential given the range of values held for these

Researching the values of stakeholders remote from the Kimberley, but with an interest in its future (web-based analysis of blogs and pictures).

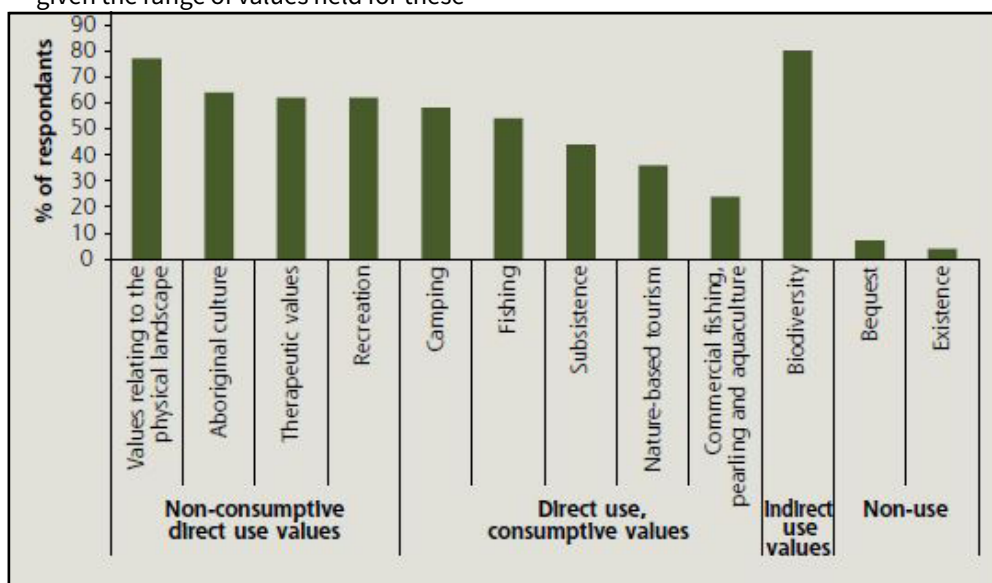


FIGURE 2 Responses across the different value categories, subsistence included food collection

Kimberley Marine Research Program

WAMSI Project 2.1.2

Values and aspirations for coastal waters of the Kimberley

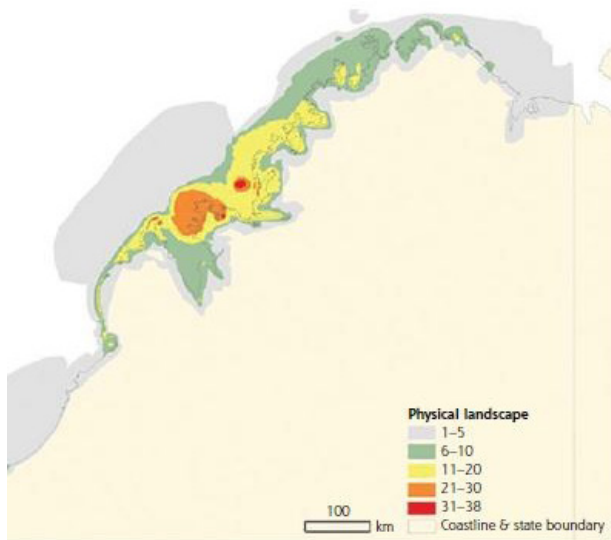


FIGURE 3 Hotspot map for values relating to the 'physical landscape'. Numbers are the frequency for 'physical landscape' values. The location of hot spots varied according to value type. However, Roebuck Bay, the western and northern coastal fringes and marine environments of Dampier Peninsula, the Buccaneer Archipelago, Horizontal Falls and Talbot Bay, and Montgomery Reef appeared as hot spots for a number of values. Sites northward of this also appeared as hot spots, although of less intensity than other areas.

Data available in:

- Technical reports (x4): qualitative values information as well as mapped 'hot spot' figures
- GIS layers
- Scientific publications
- Public/ conference presentations

Project team

Prof. Susan Moore
Dr Jennifer Strickland-Munro
Dr Halina Kobryn
Dr David Palmer

Contact

Dr Halina Kobryn
School of Veterinary and Life Sciences
Murdoch University

Email:

H.Kobryn@murdoch.edu.au

Who should use this information?

Spatial information on social values will provide valuable data to marine and coastal planners and managers including the Department of Parks and Wildlife, Aboriginal Traditional Owners, Kimberley Shires and the tourism industry.

Type of data collected.

- Qualitative stakeholder interviews (spatially- explicit social values, threats to the coast, future aspirations)
- PPGIS online web survey (spatially- explicit social values & management preferences)
- GIS layers:

- Social values held for the Kimberley coast and marine environment
- Management preferences for the Kimberley coast and marine environment



Figure 4 Aboriginal Traditional Owners provided valuable insights into their relationship to country (Image: J. Strickland-Munro)



western australian
marine science institution

The \$30 million [Kimberley Marine Research Program](#) is funded through major investment supported by \$12 million from the Western Australian government's [Kimberley Science and Conservation Strategy](#) co-invested by the WAMSI partners and supported by the Traditional Owners of the Kimberley.

Kimberley Marine Research Program

WAMSI Project 2.1.2



The \$30 million [Kimberley Marine Research Program](#) is funded through major investment supported by \$12 million from the Western Australian government's [Kimberley Science and Conservation Strategy](#) co-invested by the WAMSI partners and supported by the Traditional Owners of the Kimberley.