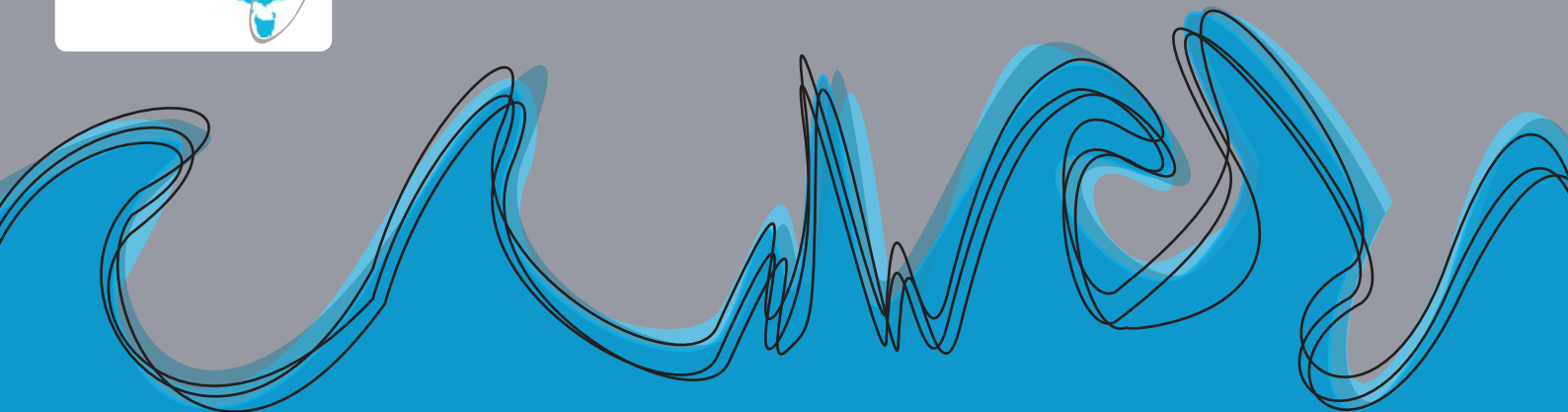




An Information Portal for the Oyster Industry



Project Background

The Australian oyster industry collects a great deal of environmental data through their monitoring programs. However this data is dispersed, inaccessible and/or difficult to interpret. Therefore, the industry identified a need to collate this information in one place – via an information portal. By accessing

and relating information such as environmental and management approaches with oyster performance, the oyster industry should become stronger and more resilient. It will provide the industry with the capacity to be pro-active in their adaptation to climate change.



Project Outline

This project will collate and translate environmental, industry, catchment and climate related data into a user-friendly, online, map-based portal. The oyster industry, its stakeholders

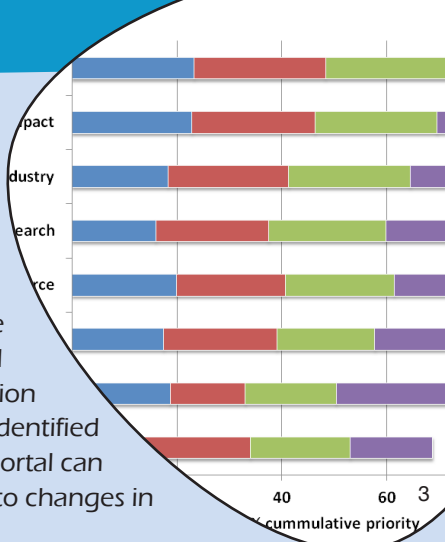
and Natural Resource Management agencies will be consulted throughout, with an initial focus on 4 oyster producing areas in NSW, for this proof of concept project.

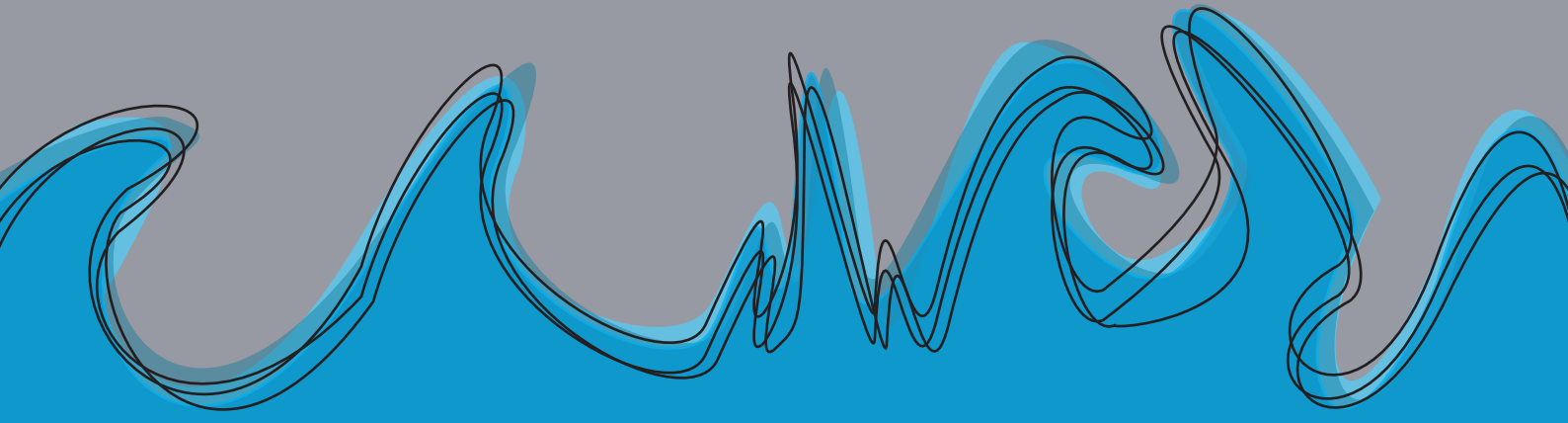


Outcomes

Oyster industry members and stakeholders will provide feedback throughout the project for a portal that includes spatial, temporal, and quantitative information that is of value to the industry. Such conditions may include water quality parameters, harmful algal blooms and lease or river oyster production performance. Scenarios and applications identified in the project will demonstrate how the portal can inform practical and adaptive responses to changes in environmental conditions.

Main Data Types by Priority





Benefit to the Community



Environmentally healthy coasts and estuaries are crucial to the production of seafood. Oyster farmers and estuary fishermen rely on healthy waterways for seafood production and the continuation of their industry. Increasing understanding of what the

important drivers are for the success and long life of their industries is vital. Such information exists and the delivery of it in an easily accessible format will benefit the industry and will add value to existing monitoring programs.

More Info

<http://www.uow.edu.au/science/research/smfc/oysterinformationportal/index.html>
http://arnmbr.org/content/images/uploads/OYSTER_REPORT_FINAL_web.pdf



Contact

Dr Ana Rubio

Shoalhaven Marine and Freshwater Centre, University of Wollongong, Shoalhaven Campus, Nowra, 2541
 Mobile: 0427 285 999; Email: arubio@uow.edu.au

Dr Pia Winberg

Shoalhaven Marine and Freshwater Centre, University of Wollongong, Shoalhaven Campus, Nowra, 2541
 Phone: 02 4429 1522 ; Mobile: 0429 338 846; Email: pia@uow.edu.au

Images

1. Floating oyster cultivation units in Merimbula Lake, NSW;
2. Oyster industry priorities for inclusion the Oyster Information Portal;
3. Oyster grader;
4. Demonstration of the Oyster Information Portal;
5. Grower driving through oyster leases, Shoalhaven River (NSW);
6. Comparing Sydney rock oysters (*Saccostrea glomerata*) meat quality.



'With in kind support from the NSW Food Authority, Coastal Councils and Government Departments in the areas of Port Macquarie-Hastings, Hawkesbury, Shoalhaven and Pambula'

The National Climate Change Adaptation Research Plan (NARP) for Marine Biodiversity & Resources identifies research priorities in five sectoral areas: marine aquaculture, commercial & recreational fishing, conservation management, tourism & recreational uses, and cross-cutting issues.

